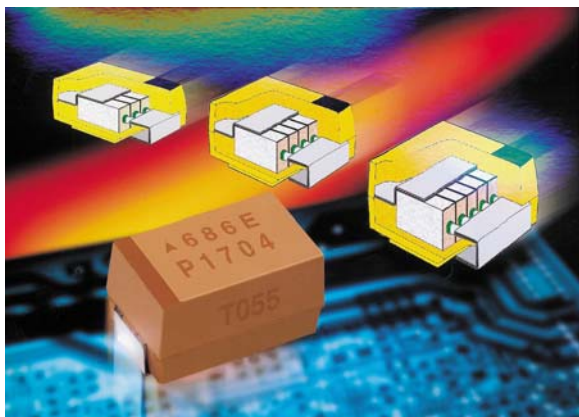
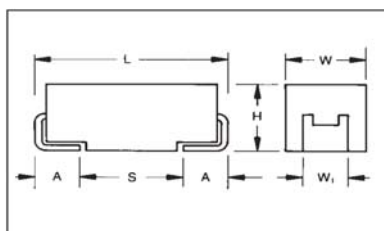


TBM Multianode Tantalum Ultra Low ESR Capacitor COTS-Plus



Multianode COTS+ Tantalum capacitors offer the lowest ESR and highest ripple current available in a solid tantalum capacitor. Capacitors are Weibull graded and surge current tested per the customer's requirements. TBM are also available with Sn/Pb terminations.

CASE DIMENSIONS: millimeters (inches)



Code	L±0.20 (0.008)	W+0.20 (0.008) -0.10 (0.004)	H+0.20 (0.008) -0.10 (0.004)	W ₁ ±0.20 (0.008)	A+0.30(0.012) -0.20 (0.008)	S Min.
E	7.30 (0.287)	4.30 (0.169)	4.10 (0.162)	2.40 (0.094)	1.30 (0.051)	4.40 (0.173)

HOW TO ORDER

TBM	E	227	*	004	L		SB	0 [^]	++
Type	Case Size	Capacitance Code pF code: 1 st two digits represent significant figures 3 rd digit represents multiplier (number of zeros to follow)	Capacitance Tolerance M = ±20% K = ±10%	Voltage Code 002 = 2.5Vdc 004 = 4Vdc 006 = 6Vdc 010 = 10Vdc 015 = 15Vdc 020 = 20Vdc 025 = 25Vdc 035 = 35Vdc	ESR L = low ESR	Packaging B = Bulk R = 7" T&R S = 13" T&R W = Waffle	Qualification/Reliability S = COTS+ B = 0.1% per 1000 hrs.	Termination Finish 08 = Tin/Lead 07 = 100% Tin	Surge Test Option 00 = None 23 = 10 cycles, +25°C 24 = 10 cycles, -55°C & +85°C

TECHNICAL SPECIFICATIONS

Technical Data:		All technical data relate to an ambient temperature of +25°C								
Capacitance Range:	22μF to 1500μF									
Capacitance Tolerance:	±10%; ±20%									
Rated Voltage (V _R)	≤ +85°C:	2.5	4	6	10	15	20	25	35	
Category Voltage (V _C)	≤ +125°C:	1.7	2.7	4	7	10	13	17	23	
Surge Voltage (V _S)	≤ +85°C:	3.3	5.2	8	13	20	26	32	46	
Surge Voltage (V _S)	≤ +125°C:	2.2	3.4	5	8	13	16	20	28	
Temperature Range:	-55°C to +125°C									
Reliability:	1% per 1000 hours at 85°C, V _R with 0.1Ω/V series impedance, 60% confidence level									

TBM Multianode

Tantalum Ultra Low ESR Capacitor COTS-Plus



CAPACITANCE AND RATED VOLTAGE RANGE (LETTER DENOTES CASE SIZE ESR LIMIT IN BRACKETS)

Capacitance		Rated voltage DC (VR) to 85°C							
µF	Code	2.5V (e)	4V (G)	6V (J)	10V (A)	15V (C)	20V (D)	25V (E)	35V (V)
10	106								
15	156								
22	226								E(100)
33	336								E(65)
47	476								E(65)
68	686							E(55)	
100	107						E(35)		
150	157					E(35)			
220	227					E(40)			
330	337				E(23)				
470	477			E(23)	E(23)				
680	687		E(18)	E(18)					
1000	108		E(18)						
1500	158	E(15)							

RATINGS & PART NUMBER REFERENCE

AVX Part No.	Case Size	Capacitance (µF)	Rated Voltage (V)	DCL (µA) Max.	DF % Max.	ESR Max.(mΩ) @100kHz	100kHz Ripple Current Ratings (A)			100kHz Ripple Voltage Ratings (V)		
							25°C	85°C	125°C	25°C	85°C	125°C
TBME158*002L SB0^++	E	1500	2.5	38	6	15	4.243	3.818	1.697	0.064	0.057	0.025
TBME687*004L SB0^++	E	680	4	27	6	18	3.873	3.486	1.549	0.070	0.063	0.028
TBME108*004L SB0^++	E	1000	4	40	6	18	3.873	3.486	1.549	0.070	0.063	0.028
TBME477*006L SB0^++	E	470	6	28	6	23	3.426	3.084	1.370	0.079	0.071	0.032
TBME687*006L SB0^++	E	680	6	41	6	18	3.873	3.486	1.549	0.070	0.063	0.028
TBME337*010L SB0^++	E	330	10	33	6	23	3.426	3.084	1.370	0.079	0.071	0.032
TBME477M010L SB0^++	E	470	10	47	6	23	3.426	3.084	1.370	0.079	0.071	0.032
TBME157*015L SB0^++	E	150	15	24	6	30	3.000	2.700	1.200	0.090	0.081	0.036
TBME227*015L SB0^++	E	220	15	35	6	40	2.598	2.338	1.039	0.104	0.094	0.042
TBME107*020L SB0^++	E	100	20	20	6	35	2.777	2.500	1.111	0.097	0.087	0.039
TBME686*025L SB0^++	E	68	25	17	6	55	2.216	1.994	0.886	0.122	0.110	0.049
TBME226*035L SB0^++	E	22	35	8	6	100	1.643	1.479	0.657	0.164	0.148	0.066
TBME336*035L SB0^++	E	33	35	12	6	65	2.038	1.834	0.815	0.132	0.119	0.053
TBME476*035L SB0^++	E	47	35	16	6	65	2.038	1.834	0.815	0.132	0.119	0.053

All technical data relates to an ambient temperature of +25°C.
 Capacitance and DF are measured at 120Hz,
 0.5V RMS with a maximum DC bias of 2.2 volts.
 DCL is measured at rated voltage after 5 minutes.

Insert K for ±10% and M for ±20% Capacitance Tolerance

TBM MULTIANODE CONSTRUCTION

