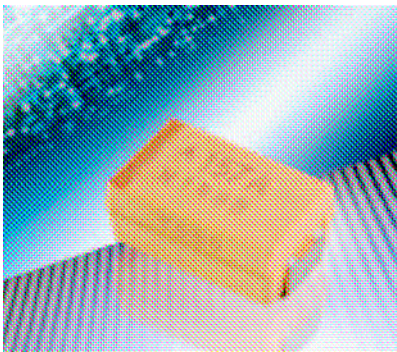
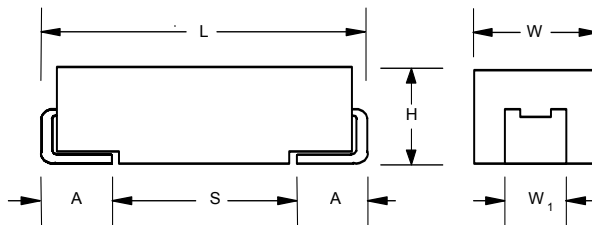


## TBW Fused Tantalum Capacitor



TBW Fused tantalum capacitors offer circuit protection for possible damaging short circuit failure mode. The internal thin film fuse offers lower ESR than competitive product, and is available with Weibull and surge current testing per Mil-PRF-55365.

### OUTLINE DIMENSIONS



### TBW CASE DIMENSIONS: millimeters (inches)

Case Code	Length(L)	Width (W)	Height (H)	Term. Width (W <sub>1</sub> ) ±0.10 (±0.004)	Term. Length (A) ±0.30 (±0.012)	S min
D	7.30±0.30 (0.287±0.012)	4.30±0.30 (0.169±0.012)	2.80±0.30 (0.110±0.012)	2.40 (0.094)	1.30 (0.051)	3.80 (0.150)

AVX Part Number	DC rated voltage (85 C) (volts)	(Cap nom) (uF)	DC Leakage (max)			Dissipation Factor (max)			ESR (max) 100 kHz (ohm)	Case Size
			+25°C (uA)	+85°C (uA)	+125°C (uA)	+25°C (%)	+85/125°C (%)	-55°C (%)		
TBWD476*016C□#@0 <sup>^</sup> ++	16	47	7.6	76.0	152.0	6	9	10	0.75	D
TBWD156*035C□#@0 <sup>^</sup> ++	35	15	5.3	53.0	106.0	6	9	9	0.75	D
TBWD475*050C□#@0 <sup>^</sup> ++	50	4.7	2.4	24.0	28.8	6	9	9	0.75	D

### HOW TO ORDER:

TBW	D	475	K	050	C	R	S	B	08	23
Style	Case Size	Capacitance	Capacitance Tolerance	Rated DC Voltage	ESR	Packaging	Qual	Reliability Grade	Terminations	Surge Current Option
		pF code: 1 <sup>st</sup> two digits represent significant figures, 3 <sup>rd</sup> digit represents number of zeros to follow	K= ±10% M= ±20%		. C= Std	B – Bulk R = 7" T&R S = 13" T&R W = Waffle	S=COTS+	B = 0.1% per 1000 hrs.	08 = Tin/Lead 00 = Solder Fused	00 = None 23 = 10 Cycles, +25C 24 = 10 Cycles, -55C & +85C

# TBW Tantalum Fused Capacitor

---